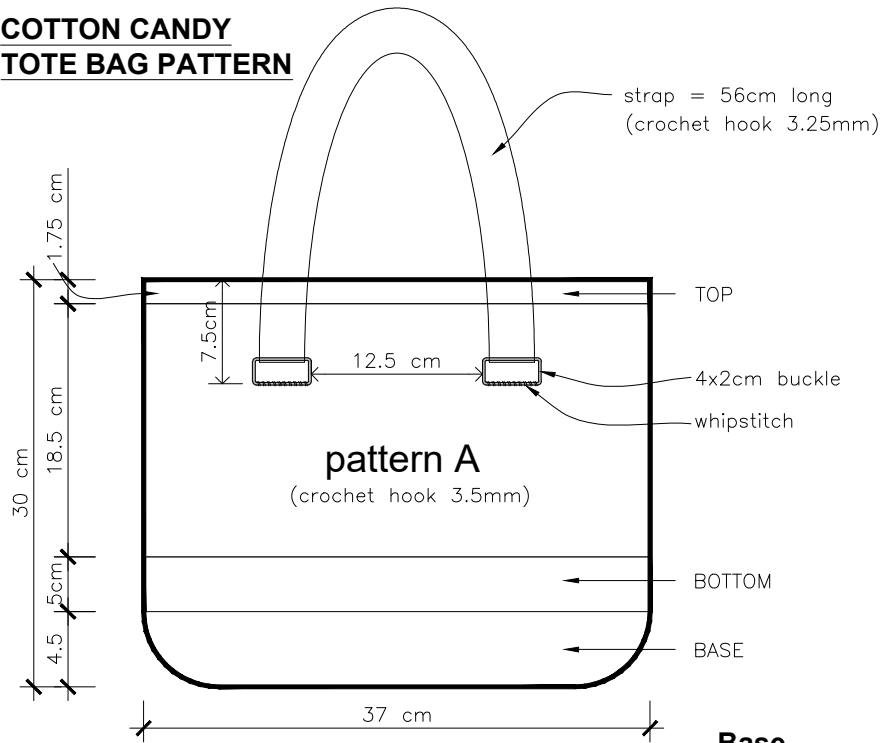
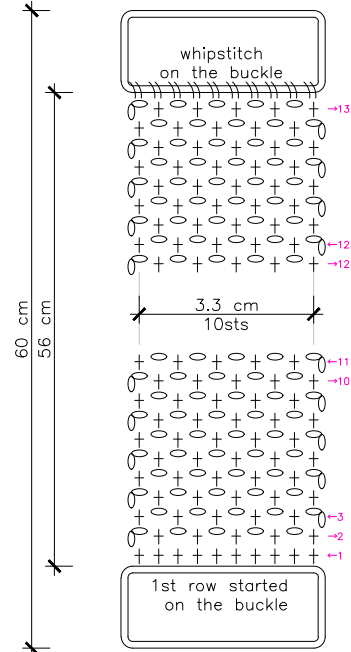


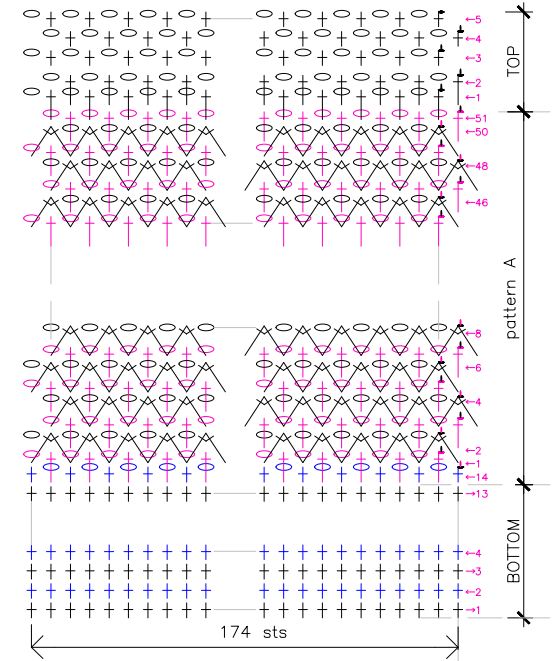
# COTTON CANDY TOTE BAG PATTERN



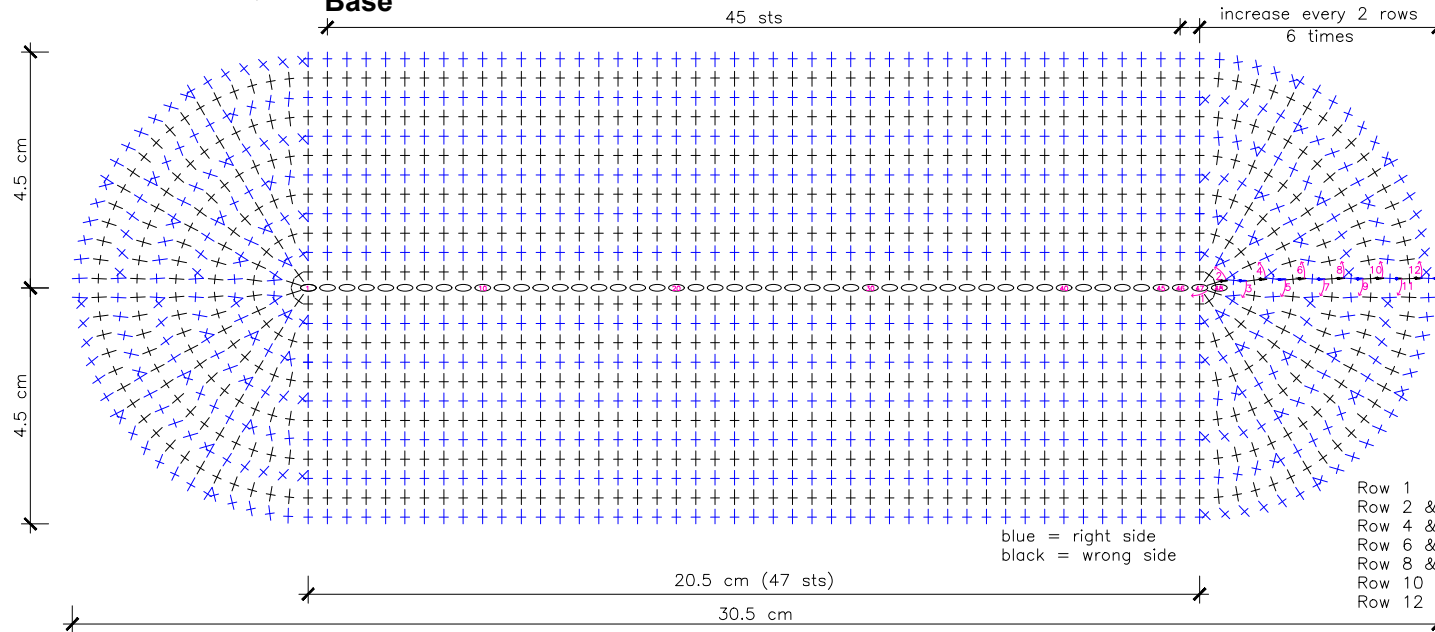
## Strap make 2



## Body



## Base



### Stitch Symbols Abbreviation

- /— slip stitch (slst) - end of the row
- chain (ch)
- ⊕ single crochet (sc)
- ↑ spike single crochet (spsc)
- ⋈ spike single crochet 2 together (spsc2tog)
- direction
- spike stitch working the stitches 2 row below